



MASSACHUSETTS DEPARTMENT OF PUBLIC HEALTH
WEEKLY INFLUENZA UPDATE
February 26, 2014

All data in this report are preliminary and subject to change as more information is received.

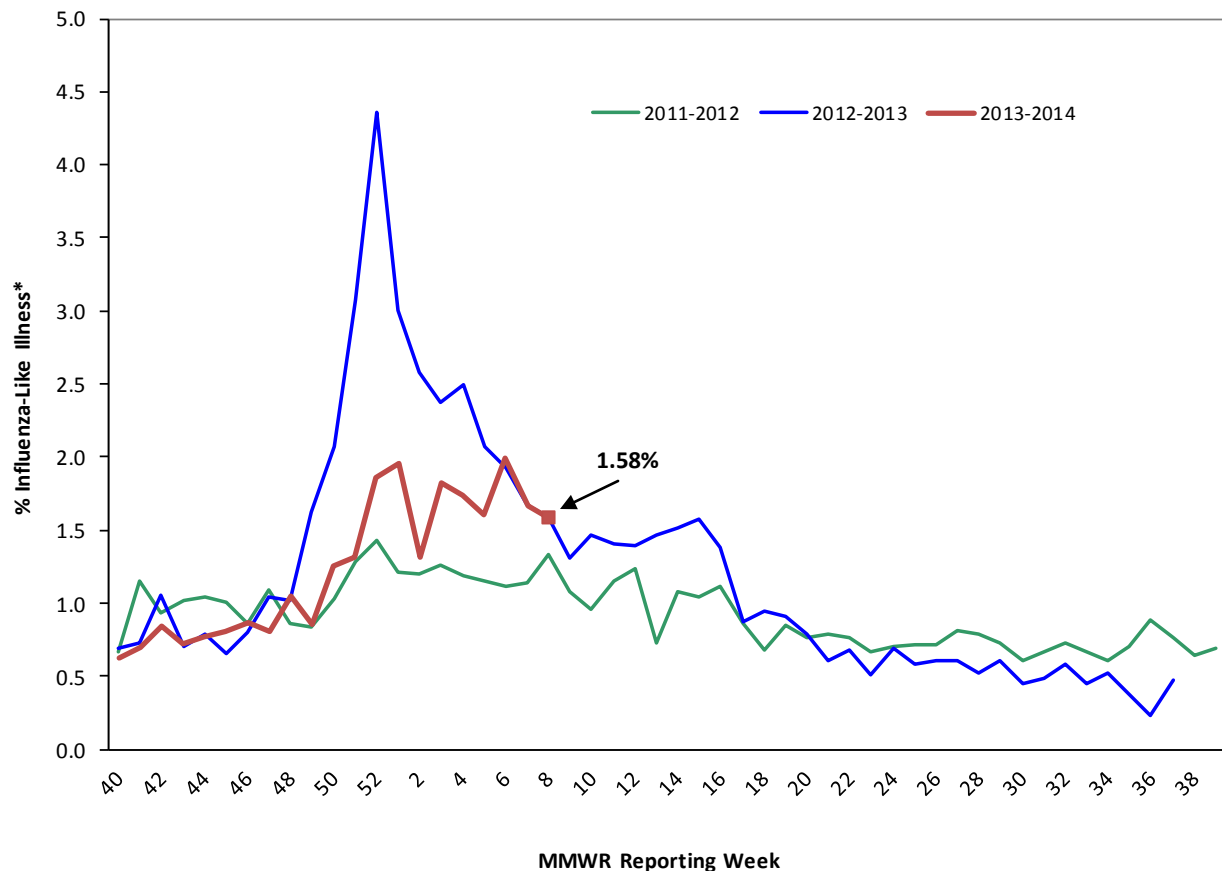
Sentinel Provider Surveillance: Influenza-like illness activity

Week 08 Activity¹ (representing geographic distribution): Widespread

Week 08 ILI Activity² (representing intensity of ILI activity): 3 (Minimal)

Provider offices across the US report the amount of influenza-like illness (ILI) they see in their patients each week during regular flu season. These outpatient providers' offices, which include doctors' offices, school health services, and community health centers, are called 'sentinel sites.' Here we present Massachusetts sentinel site data. Please note that the data represent not only confirmed influenza cases, but also those just with ILI, which may be caused by other viruses. ILI is defined as fever above 100.0¹ in addition to either cough or sore throat. ILI is a marker of influenza and is used throughout the regular influenza season to monitor influenza since most people are not tested for influenza. Figure 1 shows that ILI activity continues to fluctuate. For more information, see CDC's influenza surveillance website at www.cdc.gov/flu/weekly/fluactivitysurv.htm.

Figure 1: Percentage of ILI visits reported by sentinel provider sites



*Influenza-like illness (ILI, defined by fever >100F and cough and/or sore throat), as reported by Massachusetts sentinel surveillance sites.

¹ CDC activity indicator – indicates how widespread influenza activity level is in the state.

² CDC ILI activity indicator – more quantitative indicator of the level of ILI activity across the state.

Table 1 below shows a geographical distribution of reported ILI in Massachusetts. Table 1 shows that sentinel sites in all but one region are reporting elevated ILI activity.

Table 1: Percent ILI reported weekly by Massachusetts sentinel sites

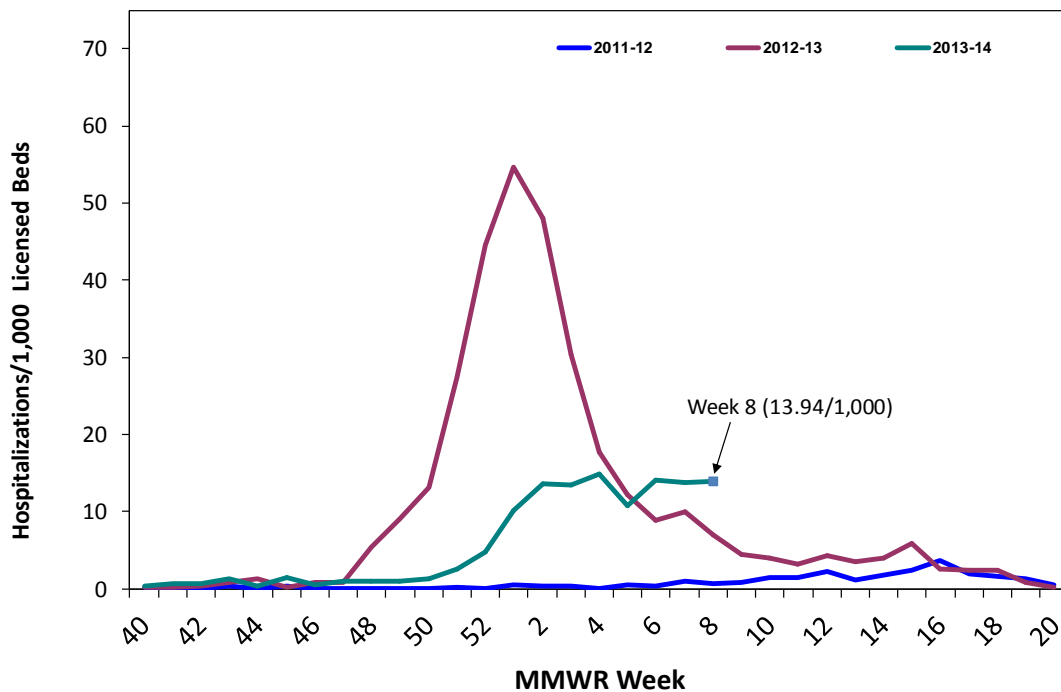
	Regional Baseline % ILI*	2013-2014			2012-2013		
		% ILI	Report. Sites	Total enroll.	% ILI	Report. Sites	Total enroll.
Boston	0.88	1.08	5	6	1.10	6	5
Central	1.47	1.12	8	12	1.82	10	11
Inner Metro Boston	0.90	1.52	7	13	1.52	11	13
Northeast	0.92	1.42	9	11	1.44	11	11
Outer Metro Boston	1.22	2.01	3	5	3.52	4	4
Southeast	3.78	3.99	3	6	1.15	4	3
West	1.50	1.85	6	7	1.87	6	7

*Regional baseline % ILI is calculated weekly using reporting providers' baseline % ILI estimates.

Influenza-Associated Hospitalizations

In 2010, MDPH began to request voluntary reporting of all laboratory-confirmed influenza hospitalizations from hospitals in Massachusetts. As many as 50 acute care hospitals from across the state report these data to MDPH on a weekly basis during flu season. The graph below shows the number of laboratory-confirmed hospitalizations per 1,000 licensed beds represented by reporting hospitals for the current season and two previous seasons.

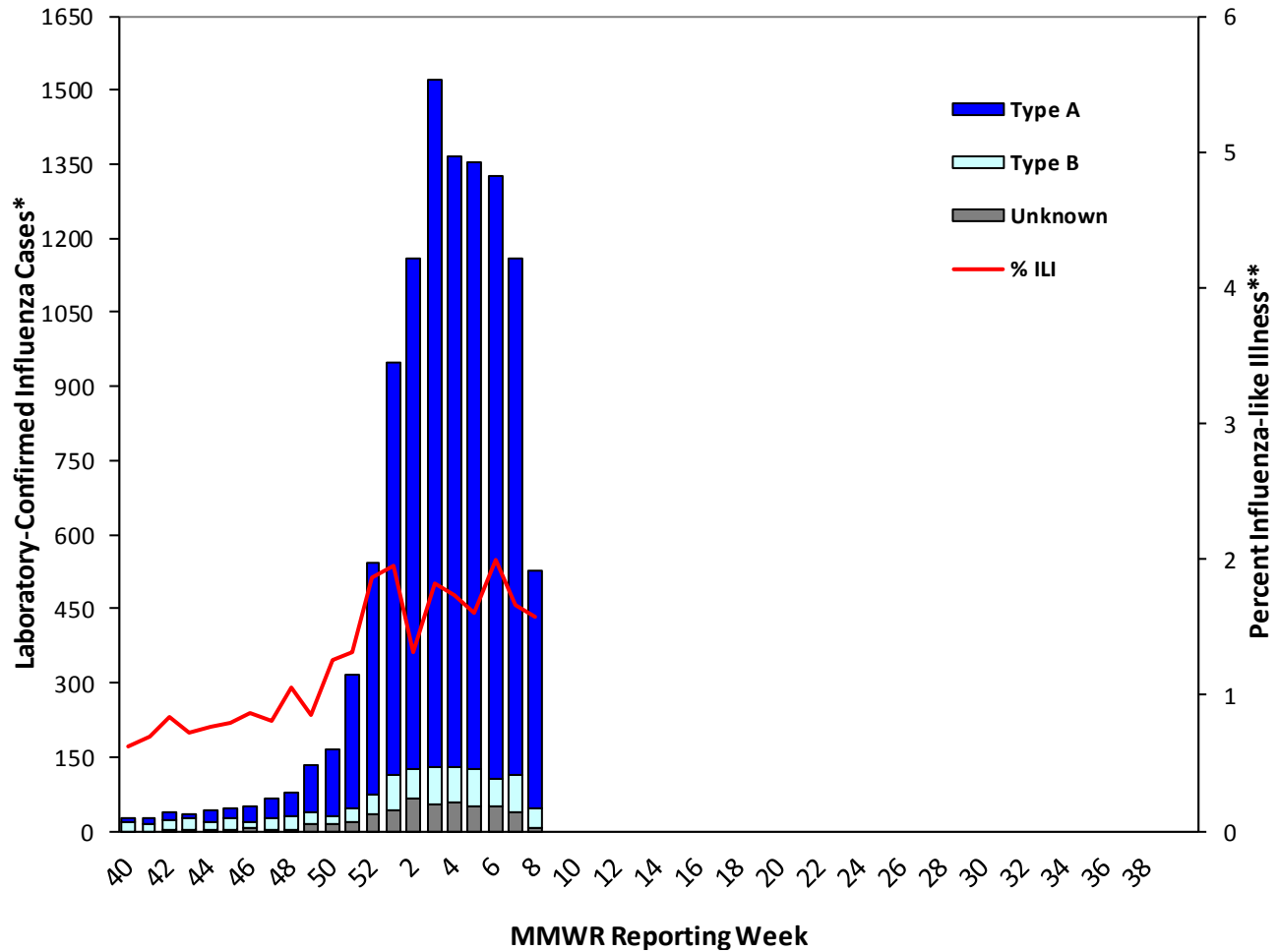
Figure 2: Massachusetts laboratory-confirmed influenza hospitalizations



Laboratory testing for influenza

Laboratories in Massachusetts report all positive influenza laboratory tests to MDPH, including viral culture, polymerase chain reaction (PCR) and rapid influenza diagnostic tests. Because the majority of cases are not tested, the number of 'confirmed' cases does not reflect the overall incidence of influenza; however, this information is essential to track the types of influenza circulating in Massachusetts and can be a useful indicator of the presence and distribution of influenza in the state. Figure 3 illustrates the number of laboratory confirmed cases in Massachusetts by week, shown along with Massachusetts ILI. Table 2 reflects the number of laboratory-confirmed influenza cases by region and influenza type.

**Figure 3: Laboratory-confirmed Influenza Cases and Influenza-like Illness
Massachusetts, September 29, 2013 – February 22, 2014**



*Influenza cases confirmed via viral culture, PCR or rapid test by specimen collection date.

**Influenza-like illness (ILI, defined as fever>100F and cough and/or sore throat), as reported by Massachusetts sentinel surveillance sites by CDC week date.

Table 2: Laboratory-confirmed Influenza by Region – 2013-2014 and 2012-2013 Influenza Seasons

Region	2013-2014						2012-2013					
	A		B		Untyped		A		B		Untyped	
	Week	YTD	Week	YTD	Week	YTD	Week	YTD	Week	YTD	Week	YTD
Boston	39	888	2	46	1	4	12	1628	14	124	0	29
Central	67	908	12	181	1	79	12	2595	47	558	2	111
Inner Metro Boston	72	1428	4	51	2	41	29	3291	41	403	7	150
Northeast	55	1961	10	308	2	100	16	3874	61	510	14	759
Outer Metro Boston	43	987	3	51	1	32	24	2559	38	371	2	231
Southeast	118	1931	6	129	0	141	40	3675	29	498	17	514
Unknown	19	298	0	21	0	0	9	942	11	125	2	14
West	66	1135	1	14	0	41	27	1473	26	415	0	88
Total	479	9,536	38	801	7	438	169	20,037	267	3,004	44	1,896

Testing at the Hinton State Laboratory Institute

MDPH’s Bureau of Laboratory Sciences (MDPH-BLS) performs confirmatory testing, typing and subtyping of influenza using PCR and viral culture primarily for samples submitted by ~60 outpatient healthcare providers (ILINet) as well as for early influenza positives and unusual cases from clinical hospital diagnostic laboratories across Massachusetts. For the 2013-2014 season, Figure 4 and Table 3 summarize virologic surveillance testing conducted by MDPH-BLS beginning MMWR week 40 (week ending October 5, 2013). MDPH-BLS performs influenza surveillance testing year round. During MMWR week eight, 11 additional cases of A (2009 H1N1) and four cases of seasonal A (H3N2) were identified. Cumulatively, A (2009 H1N1) remains the predominant strain identified to date by MDPH with 94 total cases.

Figure 4: Influenza positive tests reported to CDC by MDPH-BLS, September 29, 2013 – February 22, 2014

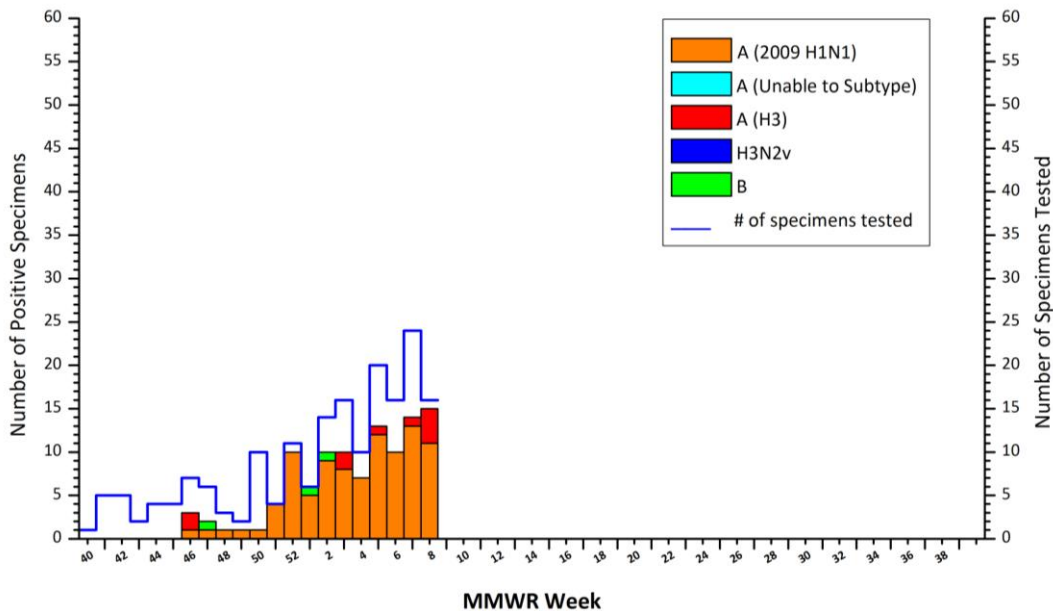


Table 3: Weekly Summary of MDPH-BLS Influenza Surveillance Test Results

2013-2014 Season: Influenza Surveillance									
MA Department of Public Health's Bureau of Laboratory Sciences (MDPH-BLS)									
MMWR Week: (Specimen Collected)	2009 H1N1	seasonal A/H3N2	B	H3N2v	A unsub	No. Flu Pos (%)	Unsat	Total Tested	Total Rec'd
05 (01/26- 02/01/2014)	12	1	0	0	0	13(65%)	3	20	23
06 (02/02- 02/08/2014)	10	0	0	0	0	10(63%)	2	16	18
07 (02/09- 02/15/2014)	13	1	0	0	0	14(58%)	1	24	25
08 (02/16- 02/22/2014)	11	4	0	0	0	15(94%)	2	16	18
Prior 4 wk Total	46	6	0	0	0	52(68%)	8	76	84
Cumulative Season total	94	10	3	0	0	107 (58%)	32	186	218

All data are subject to change as test results become finalized. The 2013-2014 influenza season began MMWR 40 (09/29- 10/05/2013).

At the start of the 2013-2014 season, the first 10 isolates and thereafter 5 representative isolates every two weeks will be sent by MDPH-BLS to a CDC contract lab performing National Routine Surveillance to include antigenic characterization by hemagglutination inhibition (HI), genetic analysis (sequencing) and sensitivity to FDA-approved drugs for identification of resistance. As samples are received, MDPH-BLS will screen additional samples every two weeks to detect point mutations within the neuraminidase gene of H3N2 viruses (E119, R292, and N294) and influenza A (2009) viruses (H275 and I223) to assess resistance trends. This information will be reported locally and captured nationally in FluView.

Two influenza A(H3N2) specimens, five 2009 A(H1N1) specimens, and one influenza B specimen have been characterized for the 2013-2014 season to date. All five 2009 A(H1N1) specimens, one influenza A(H3N2) specimen, and the influenza B specimen were consistent with strains in the 2013-2014 seasonal influenza vaccine. One A(H3N2) specimen was not consistent with the strain included in the vaccine.

There were three 2009 A(H1N1) isolates from MA during the 2009-2010 season with a mutation conferring oseltamivir-resistance (H275Y) and none during the 2010-2011, 2011-2012 and 2012-13 seasons. There have been no specimens identified with mutations associated with Oseltamivir resistance for the 2013-2014 season to date.

Table 4: DPH-BLS Influenza Antiviral Resistance Screening: 2013-2014 Season

DPH-BLS Influenza Antiviral Resistance Screening: 2013-2014 Season				
Virus Collection Period: September 29, 2013- ongoing				
	Oseltamivir		Zanamivir	
	Samples Tested	Resistant Viruses, Number (%)	Samples Tested	Resistant Viruses, Number (%)
Influenza A (H3N2)ⁱ	6	0 (0)	6	0 (0)
Influenza A (H1N1)pdm09ⁱⁱ	81	0 (0)	0	0 (0)

ⁱ Samples tested by pyrosequencing at position E119, R292, and N294 within the neuraminidase (NA) gene.

ⁱⁱ Samples tested by pyrosequencing at position H275 and I223 within the NA gene.

Additional information on national antiviral resistance testing can be found at <http://www.cdc.gov/flu/weekly/>. Recommendations for antiviral treatment and chemoprophylaxis of influenza virus infection can be found at <http://www.cdc.gov/flu/professionals/antivirals/index.htm>.