



MASSACHUSETTS DEPARTMENT OF PUBLIC HEALTH
WEEKLY INFLUENZA UPDATE
May 27, 2016

All data in this report are preliminary and subject to change as more information is received.

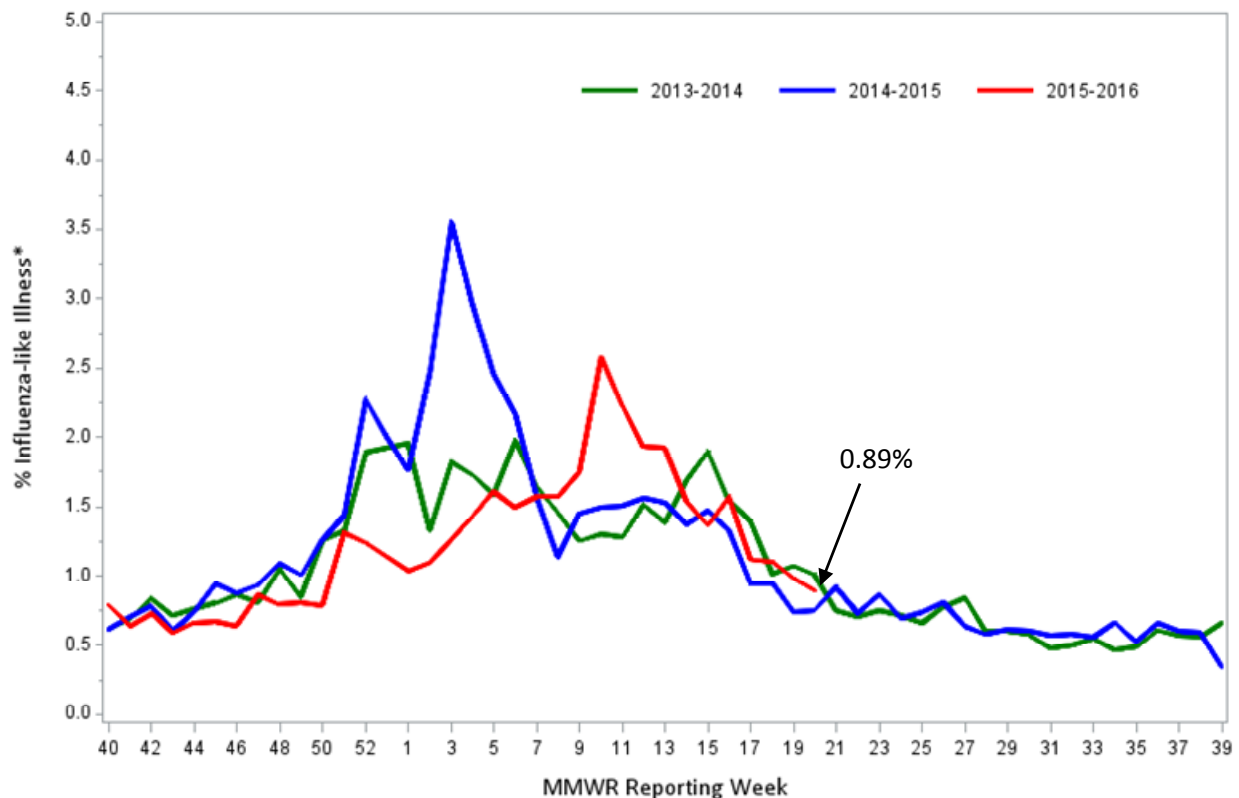
Sentinel Provider Surveillance: Influenza-like illness activity

Week 20 Activity¹ (representing geographic distribution): Regional

Week 20 ILI Activity² (representing intensity of ILI activity): 1 (Minimal)

Provider offices across the US report the amount of influenza-like illness (ILI) they see in their patients each week during regular flu season. These outpatient providers' offices, which include doctors' offices, school health services, and community health centers, are called 'sentinel sites.' Here we present Massachusetts sentinel site data. Please note that the data represent not only confirmed influenza cases, but also those just with ILI, which may be caused by other viruses. ILI is defined as fever above 100.0¹ in addition to either cough or sore throat. ILI is a marker of influenza and is used throughout the regular influenza season to monitor influenza since most people are not tested for influenza. Figure 1 shows that ILI activity continues to decrease, consistent with activity levels normally seen at this time of year. For more information, see CDC's influenza surveillance website at www.cdc.gov/flu/weekly/fluactivitysurv.htm.

Figure 1: Percentage of ILI visits reported by sentinel provider sites



*Influenza-like illness (ILI, defined by fever >100F and cough and/or sore throat), as reported by Massachusetts sentinel surveillance sites

¹ CDC activity indicator – indicates how widespread influenza activity level is in the state.

² CDC ILI activity indicator – more quantitative indicator of the level of ILI activity across the state.

Table 1 below shows a geographical distribution of reported ILI in Massachusetts. Table 1 shows that sentinel sites in two regions of the state are experiencing elevated ILI activity.

Table 1: Percent ILI reported weekly by Massachusetts sentinel sites

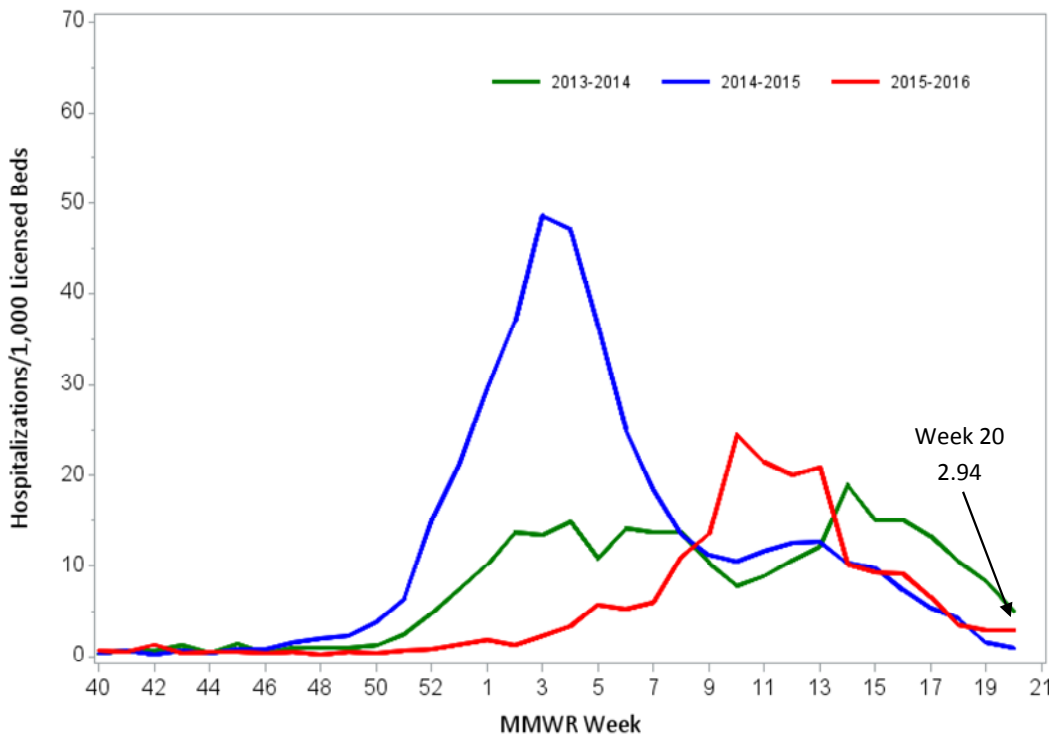
	Regional Baseline % ILI*	2015-2016			2014-2015		
		% ILI	Report. Sites	Total enroll.	% ILI	Report. Sites	Total enroll.
Boston	0.87	0.91	2	6	0.55	3	6
Central	1.06	0.09	6	10	0.48	6	10
Inner Metro Boston	0.84	1.07	8	11	0.68	8	12
Northeast	0.83	0.83	7	9	0.93	7	9
Outer Metro Boston	1.96	1.41	1	5	1.31	4	5
Southeast	0.78	0.67	1	4	0.25	2	4
West	0.79	0.22	3	5	0.72	3	7

*Regional baseline % ILI is calculated weekly using reporting providers' baseline % ILI estimates.

Influenza-Associated Hospitalizations

In 2010, MDPH began to request voluntary reporting of all laboratory-confirmed influenza hospitalizations from hospitals in Massachusetts. As many as 50 acute care hospitals from across the state report these data to MDPH on a weekly basis during flu season. The graph below shows the number of laboratory-confirmed hospitalizations per 1,000 licensed beds represented by reporting hospitals for the current season and two previous seasons.

Figure 2: Massachusetts laboratory-confirmed influenza hospitalizations



Laboratory testing for influenza

Laboratories in Massachusetts report all positive influenza laboratory tests to MDPH, including viral culture, polymerase chain reaction (PCR) and rapid influenza diagnostic tests. Because the majority of cases are not tested, the number of 'confirmed' cases does not reflect the overall incidence of influenza; however, this information is essential to track the types of influenza circulating in Massachusetts and can be a useful indicator of the presence and distribution of influenza in the state. Figure 3 illustrates the number of laboratory confirmed cases in Massachusetts by week, shown along with Massachusetts ILI. Table 2 reflects the number of laboratory-confirmed influenza cases by region and influenza type.

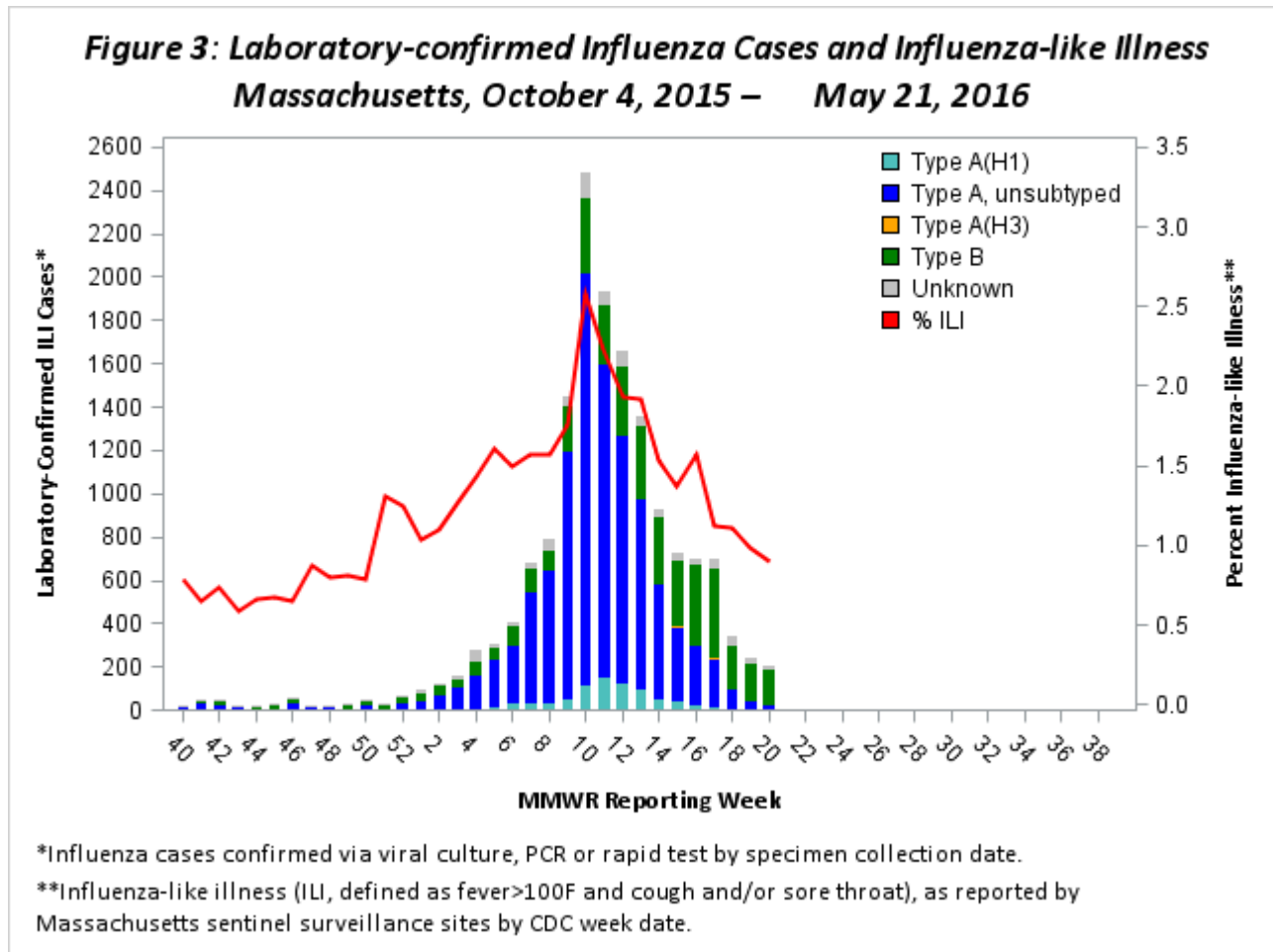


Table 2: Laboratory-confirmed Influenza by Region – 2015-2016 and 2014-2015 Influenza Seasons

Region	2015-2016						2014-2015					
	A		B		Untyped		A		B		Untyped	
	Week	YTD	Week	YTD	Week	YTD	Week	YTD	Week	YTD	Week	YTD
Boston	5	1,326	14	347	2	61	13	2,222	8	603	0	232
Central	2	1,035	13	422	4	106	0	2,075	5	651	2	186
Inner Metro Boston	7	1,369	24	463	4	102	5	3,949	9	895	0	287
Northeast	4	2,161	34	1,163	0	70	1	6,066	5	1,205	1	451
Outer Metro Boston	1	1,143	11	392	4	125	2	3,330	2	803	0	309
Southeast	6	2,190	29	787	0	156	0	4,818	11	1,008	4	561
Unknown	2	177	4	73	0	15	0	1,285	5	369	0	73
West	2	1,771	32	441	0	19	0	1,909	3	660	0	87
Total	29	11,172	161	4,088	14	654	21	25,654	48	6,194	7	2,186

Testing at the Hinton State Laboratory Institute

As part of a more comprehensive respiratory surveillance initiative, MDPH’s Bureau of Laboratory Sciences (MDPH-BLS) performs testing to confirm typing and subtyping of circulating influenza viruses followed by testing of influenza-negative samples for the evidence of adenovirus, respiratory syncytial virus (RSV) A/B, parainfluenza virus (PIV) types 1-4 , coronavirus (HCoV) HKU1, OC43, NL63, 229E, human metapneumovirus (HMPV), and rhinovirus/enterovirus (RHV/ENT) using a multiplex PCR respiratory viral panel. Samples are submitted by ~60 outpatient healthcare providers (ILINet) and include early influenza positives, as well as specimens and isolates from clinical hospital diagnostic laboratories across Massachusetts. For the 2015-2016 season, Figure 4 and Tables 3 and 4 summarize virologic surveillance testing conducted by MDPH-BLS beginning MMWR week 40 (week ending October 10, 2015). MDPH-BLS performs influenza surveillance testing year round. For the 2015-2016 season to date, 25 cases of influenza B/Yamagata, 48 cases of B/Victoria, 139 cases of A/2009 H1N1, and five cases of A/H3N2 influenza have been confirmed in 419 cases tested.

Figure 4: Influenza positive tests reported to CDC by MDPH-BLS, October 4, 2015 – May 21, 2016

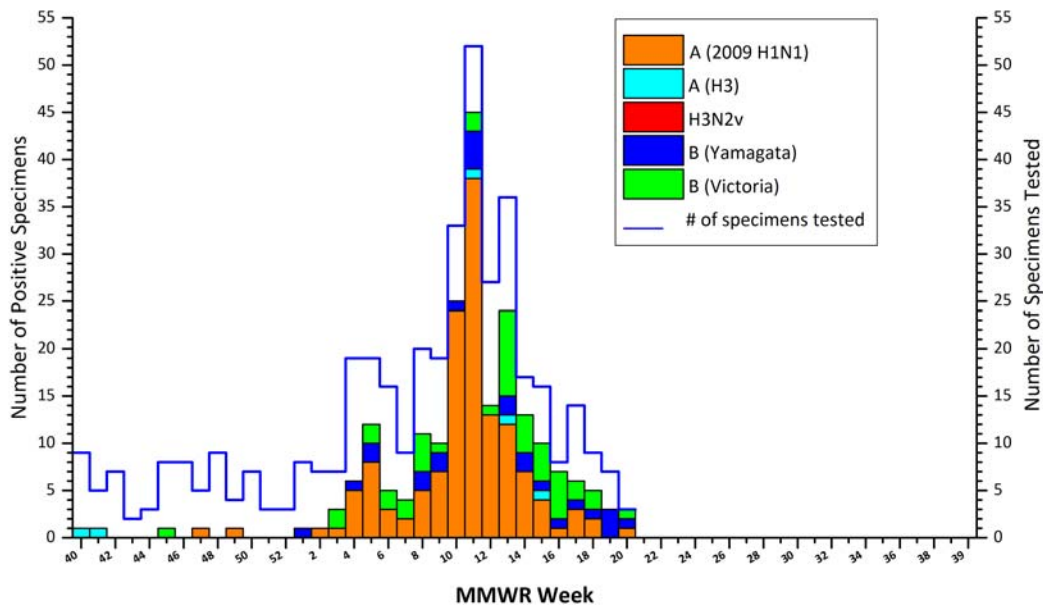


Table 3: Weekly Summary of MDPH-BLS Influenza Surveillance Test Results

2015-2016 Season: Influenza Surveillance									
MA Department of Public Health's Bureau of Laboratory Sciences (MDPH-BLS)									
MMWR Week: (Specimen Collected)	2009 H1N1	seasonal A/H3N2	H3N2v	B Yam	B Vic	No. Flu Pos (%)	Unsat	Total Tested	Total Rec'd
17 (04/24 – 04/30/2016)	3	0	0	1	2	6(43%)	1	14	15
18 (05/01 – 05/07/2016)	2	0	0	1	2	5(56%)	0	9	9
19 (05/08 – 05/14/2016)	0	0	0	3	0	3(43%)	0	7	7
20 (05/15 – 05/21/2016)	1	0	0	1	1	3(100%)	0	3	3
Prior 4 wk Total	6	0	0	6	5	17(52%)	1	33	34
Cumulative Season total	139	5	0	25	48	217(52%)	21	419	440

All data are subject to change as test results become finalized. The 2015 -2016 influenza season began MMWR 40 (10/04- 10/10/2015).

Table 4: Weekly Summary of MDPH-BLS non-Influenza Respiratory Surveillance Test Results

2015-2016 Season: Influenza Like Illness Surveillance											
MA Department of Public Health's Bureau of Laboratory Sciences (MDPH-BLS)											
MMWR Week: (Specimen Collected)	RSV	RHV/ ENT	PIV	HMPV	HCV	ADV	# Co- Infection	No. Pos (%)	Unsat	Total Tested	Total Rec'd
17 (04/24 – 04/30/2016)	0	2	1	1	0	0	0	4(50%)	1	8	9
18 (05/01 – 05/07/2016)	0	1	0	0	0	0	0	1(25%)	0	4	4
19 (05/08 – 05/14/2016)	0	1	1	0	0	0	0	2(50%)	1	4	5
20 (05/15 – 05/21/2016)	0	0	0	0	0	0	0	0(0%)	0	0	0
Prior 4 wk Total	0	4	2	1	0	0	0	7(44%)	2	16	18
Cumulative Season total	21	28	10	6	12	2	3	76(38%)	2	201	203

All data are subject to change as test results become finalized. The 2015 -2016 influenza season began MMWR 40 (10/04- 10/10/2015).

At the start of the 2015-2016 season, the first 10 original specimens positive for influenza virus and thereafter 5 representative specimens every two weeks will be sent by MDPH-BLS to a CDC contract laboratory performing National Influenza Virus Surveillance to include antigenic characterization by hemagglutination inhibition (HI), genetic analysis (sequencing) and sensitivity to FDA-approved drugs for identification of resistance. For the 2015-2016 season, three A/H3N2 specimens, seven A/H1N1 specimens, four B/Victoria specimens, and three B/Yamagata specimen have been characterized. All strains were consistent with viruses covered by the 2015 Southern Hemisphere and the 2015-2016 Northern Hemisphere vaccine formulations.

As samples are received, MDPH-BLS will screen additional samples every two weeks to detect point mutations within the neuraminidase gene of influenza A/H3N2 viruses (E119, R292, and N294) and influenza A/2009 H1N1 viruses (H275 and I223) to assess resistance trends. This information will be reported locally and captured nationally in FluView (<http://www.cdc.gov/flu/weekly/>). For the 2015-2016 season to date, one A/2009 H1N1 isolate with a mutation conferring oseltamivir-resistance (H275H/Y) has been detected.

Table 5: DPH-BLS Influenza Antiviral Resistance Screening: 2015-2016 Season

Virus Collection Period: October 4, 2015- ongoing				
	Oseltamivir		Zanamivir	
	Samples Tested	Resistant Viruses, Number (%)	Samples Tested	Resistant Viruses, Number (%)
Influenza A (H3N2)ⁱ	2	0(0%)	2	0 (0)
Influenza A (H1N1)pdm09ⁱⁱ	93	1(1%)	0	0 (0)

ⁱ Samples tested by pyrosequencing at position E119, R292, and N294 within the neuraminidase (NA) gene.

ⁱⁱ Samples tested by pyrosequencing at position H275 and I223 within the NA gene.

Additional information on national antiviral resistance testing including recommendations for antiviral treatment and chemoprophylaxis of influenza virus infection can be found at <http://www.cdc.gov/flu/weekly/>.